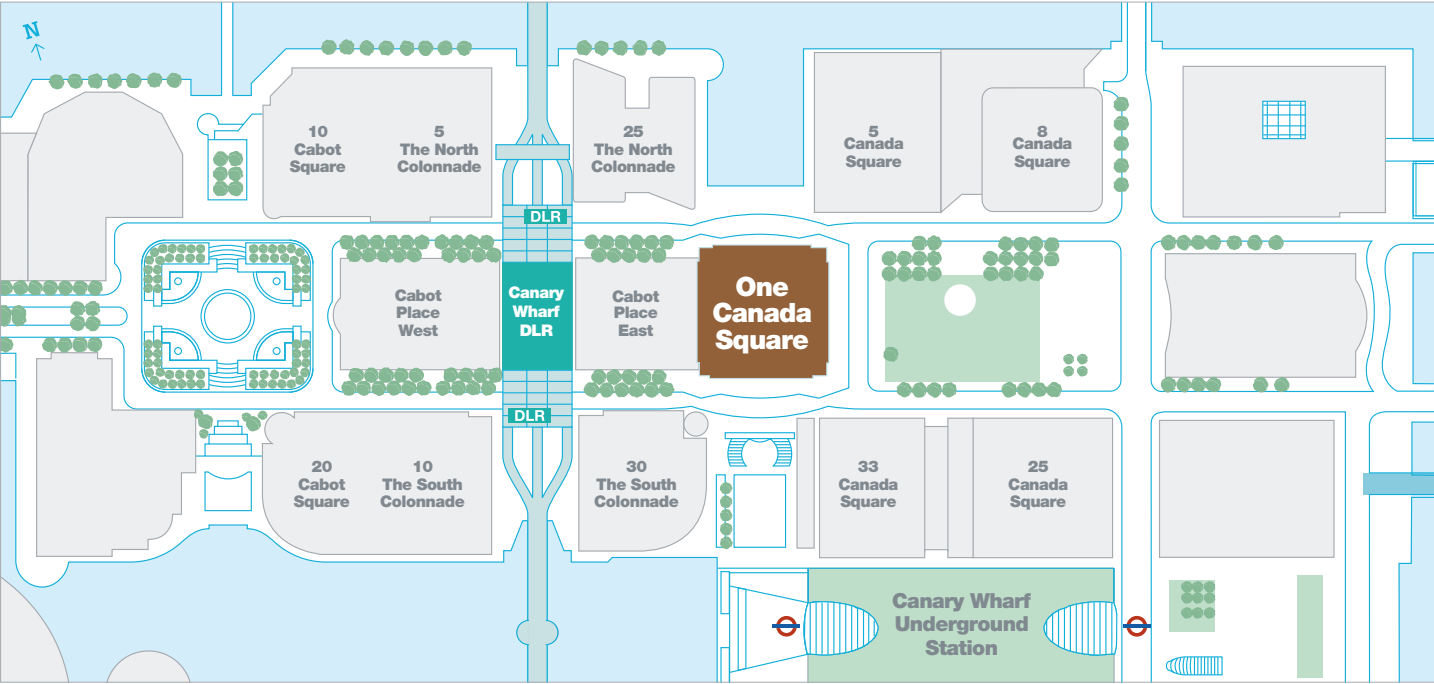
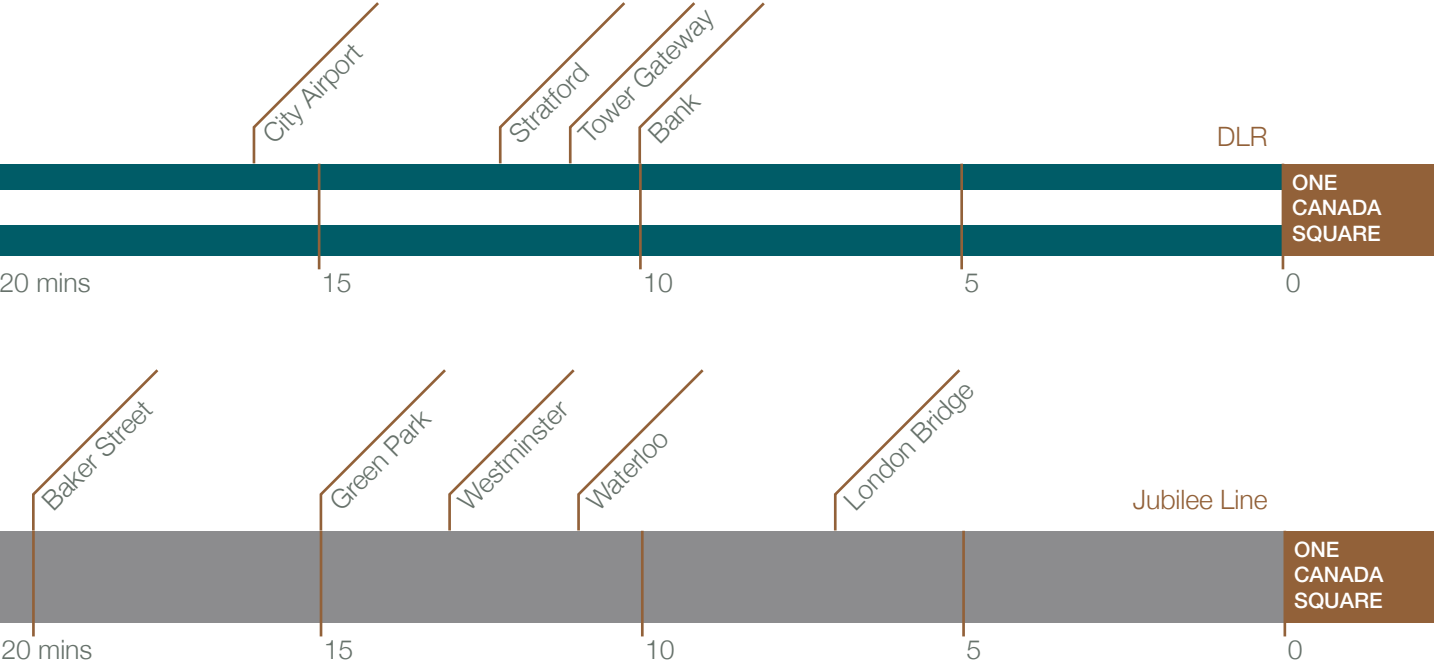
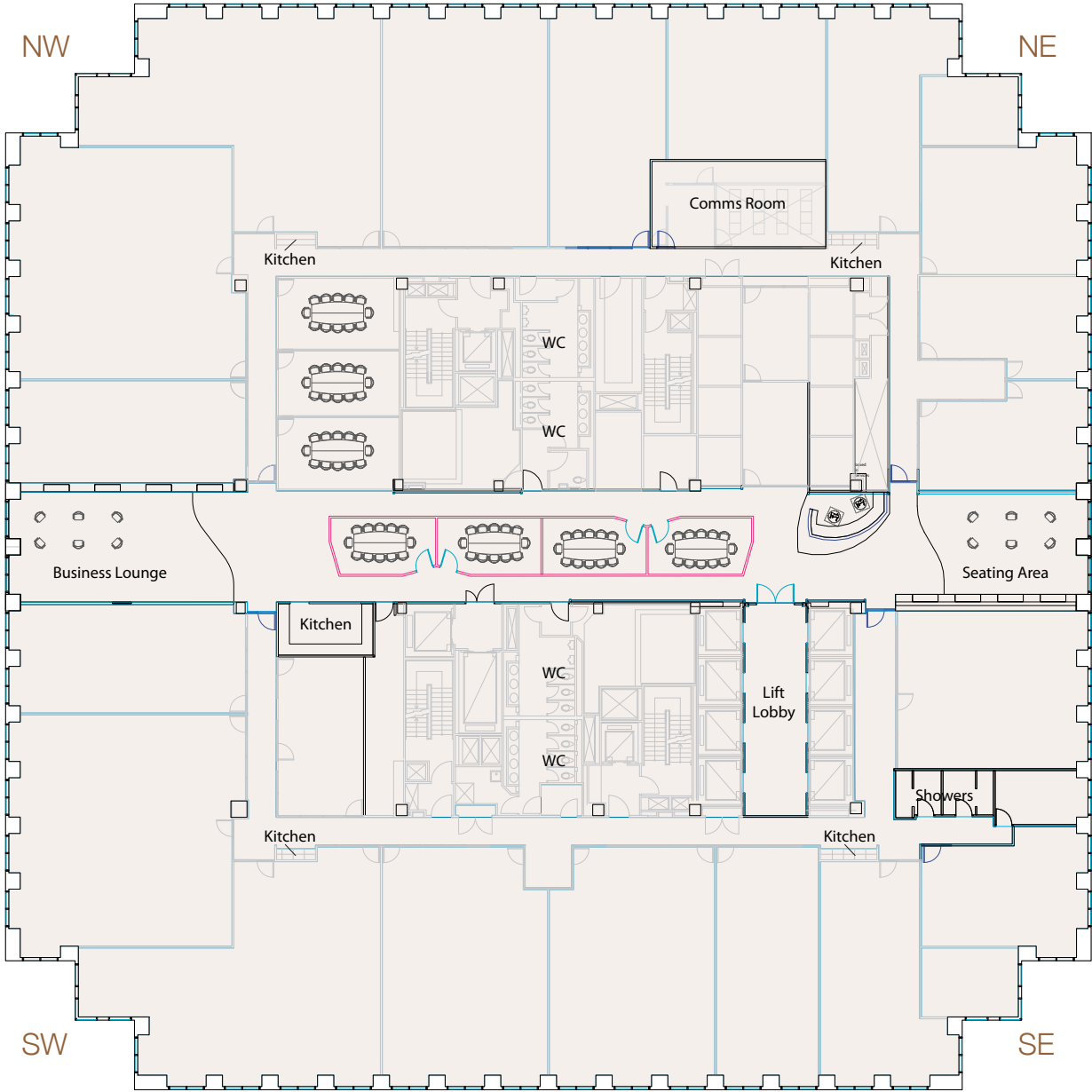


# Transport

With its own underground and Docklands Light Railway stations and the nearby City Airport, Canary Wharf boasts a world-class rail and air transport infrastructure.



# Floor Specification



- Fully serviced offices from 2 to 300 workstations
- Flexible agreement terms: 3 months +
- All suites furnished & air-conditioned
- 'Plug & Play' voice & data options installed
- Instant occupation available
- Ability to increase or decrease space
- No Capital Expenditure required
- Spectacular London views from all offices
- Stunning lobby & business lounge
- Professional meeting & board rooms
- Reception & call answering service
- On-site management team
- 24/7 access & manned security

For further information and viewings contact the letting agents:



**020 7718 0111**  
www.mccalmont-woods.com

Nick McCalmont-Woods  
**One Canada Square**  
London E14 5AA  
nick@mccalmont-woods.com

**Misrepresentation Act 1967**  
McCalmont-Woods give notice that: these particulars are set out as a general outline only, for the guidance of intending purchasers or lessees and do not constitute, nor constitute part of, an offer or contract; all descriptions, dimensions, references to condition and necessary permission for use in occupation and other details are given without responsibility, and any intending purchasers or tenants should not rely on them as statements or representations of fact, but must satisfy themselves by inspection or otherwise as to the correctness of each of them. All floor areas and measurements are approximate. All space planning is indicative only and may require alterations to the building design. June 2008.

Brochure designed and produced by:  
**Forge** 020 8849 8180 [www.forgelondon.com](http://www.forgelondon.com)



**ABBEY**  
BUSINESS CENTRES

**One Canada Square**  
**Level 37**



# Welcome to One Canada Square

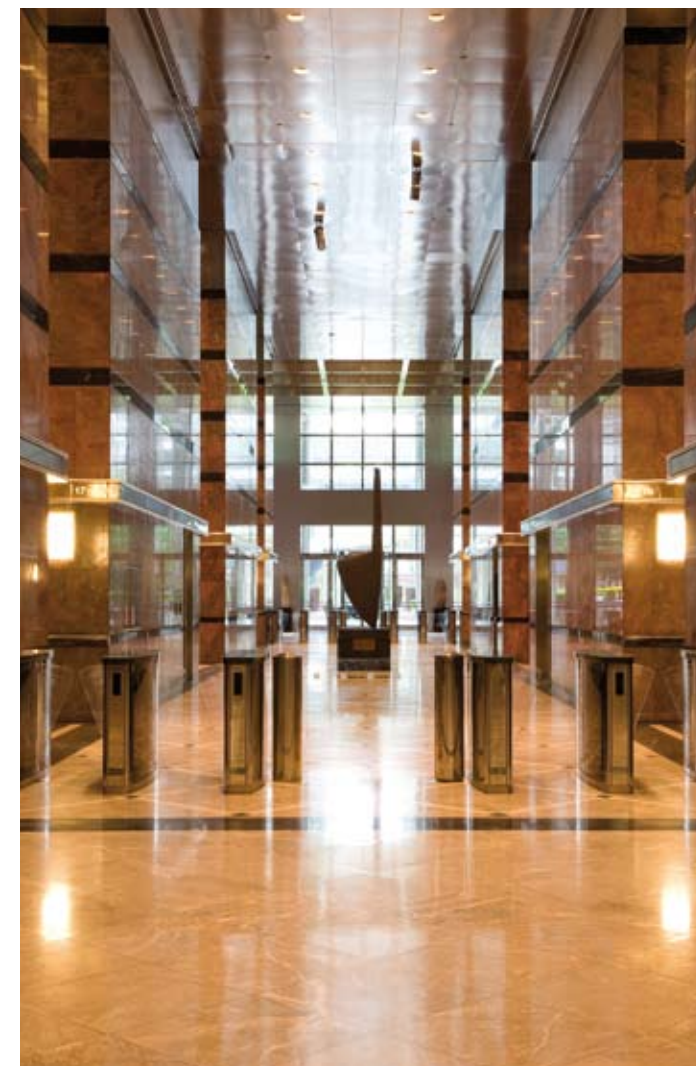
Britain's tallest building. A celebrated London Landmark. A thriving business epicentre. An iconic testament to the Capital's success and now home to the UK's highest serviced office space from Abbey Business Centres.



## Office hours

One Canada Square is home to some of the world's most renowned brands and 7500 of their employees.

Resident businesses – the likes of Bank of New York and KPMG – invest in an unparalleled level of service, unrivalled office facilities and London's most diverse range of leisure options.



## Downtime

With more than 200 shops, restaurants and bars, One Canada Square's location in the centre of Canary Wharf offers a myriad of ways to relax away from the desk.

